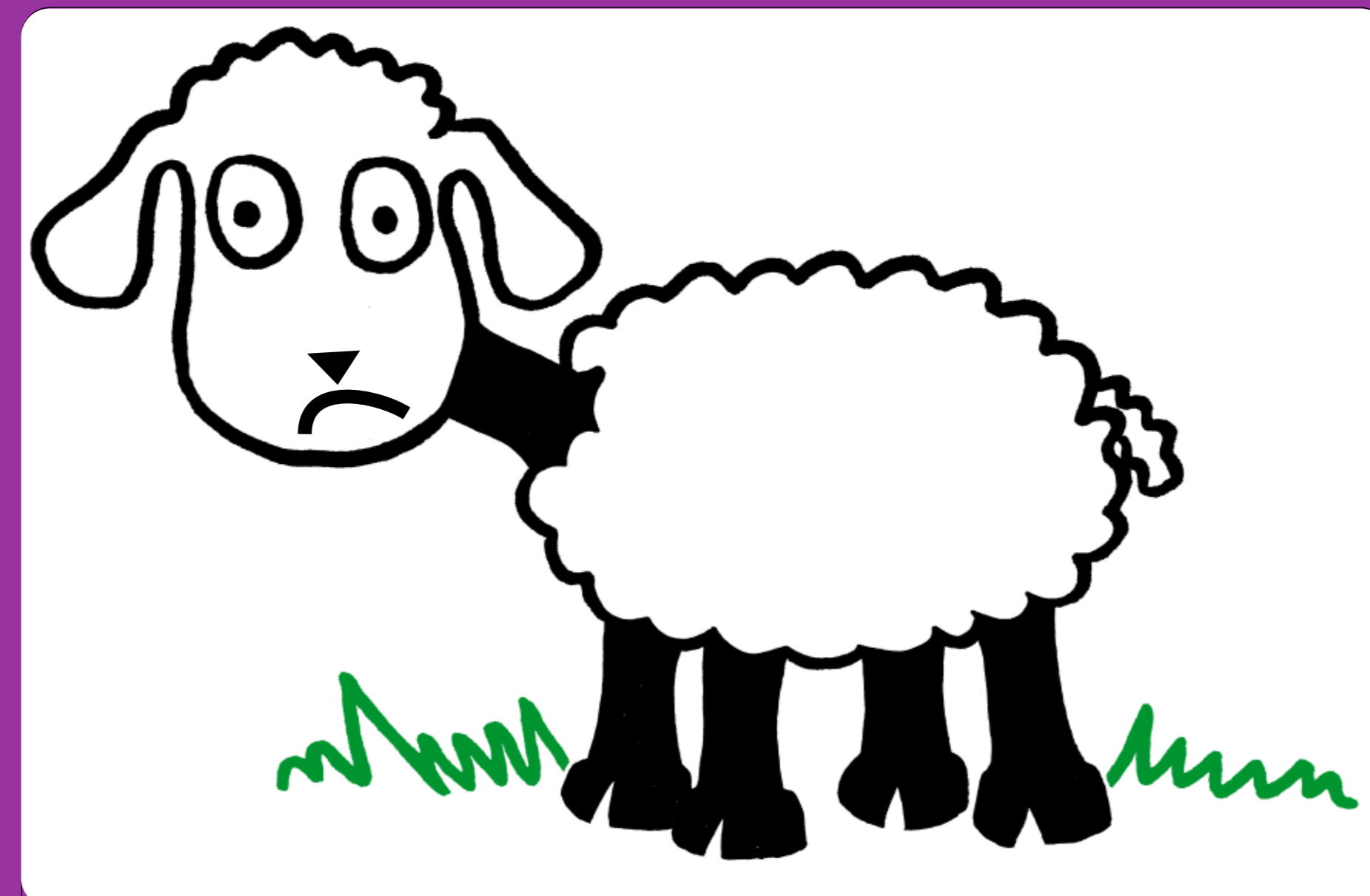
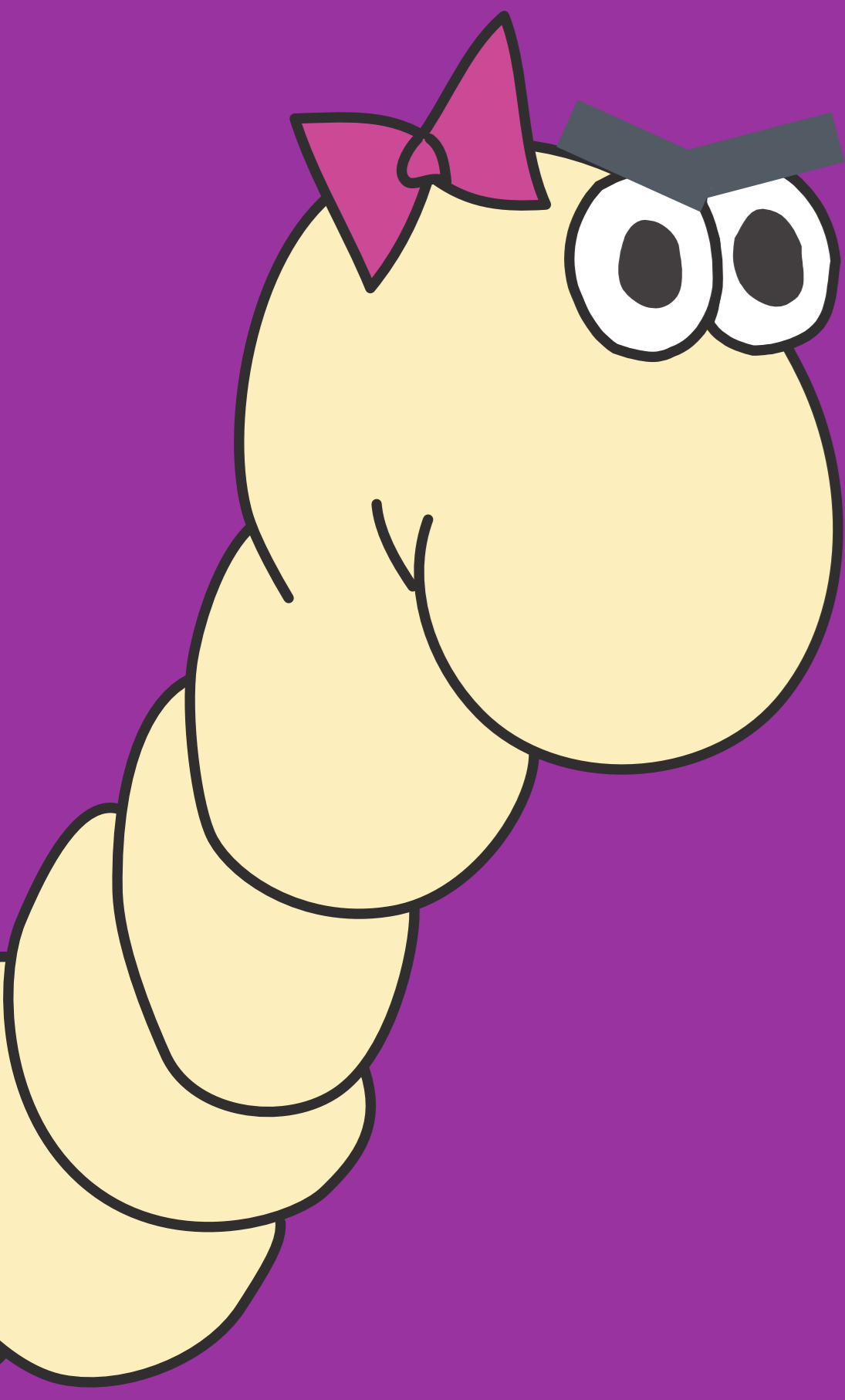
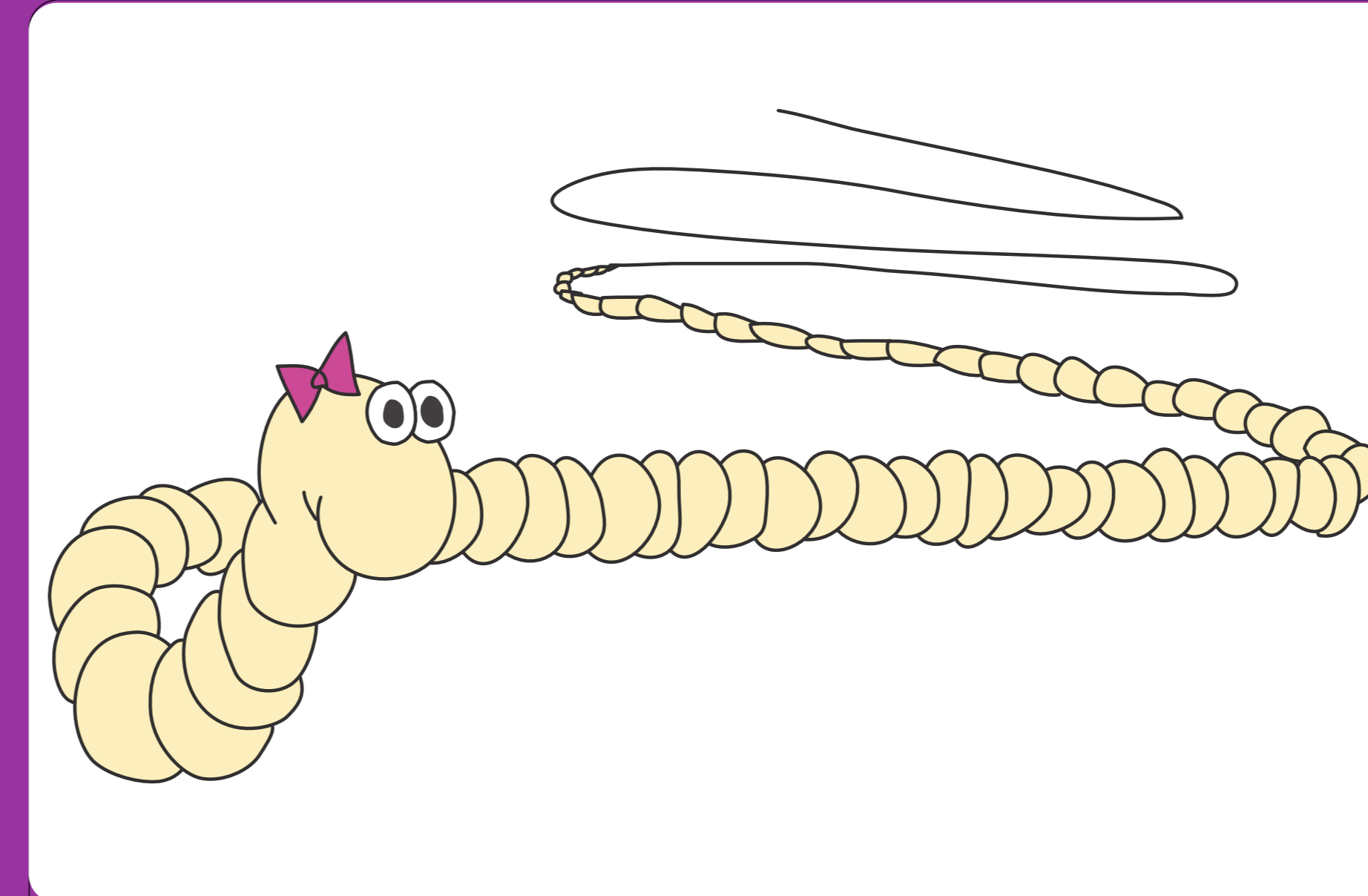


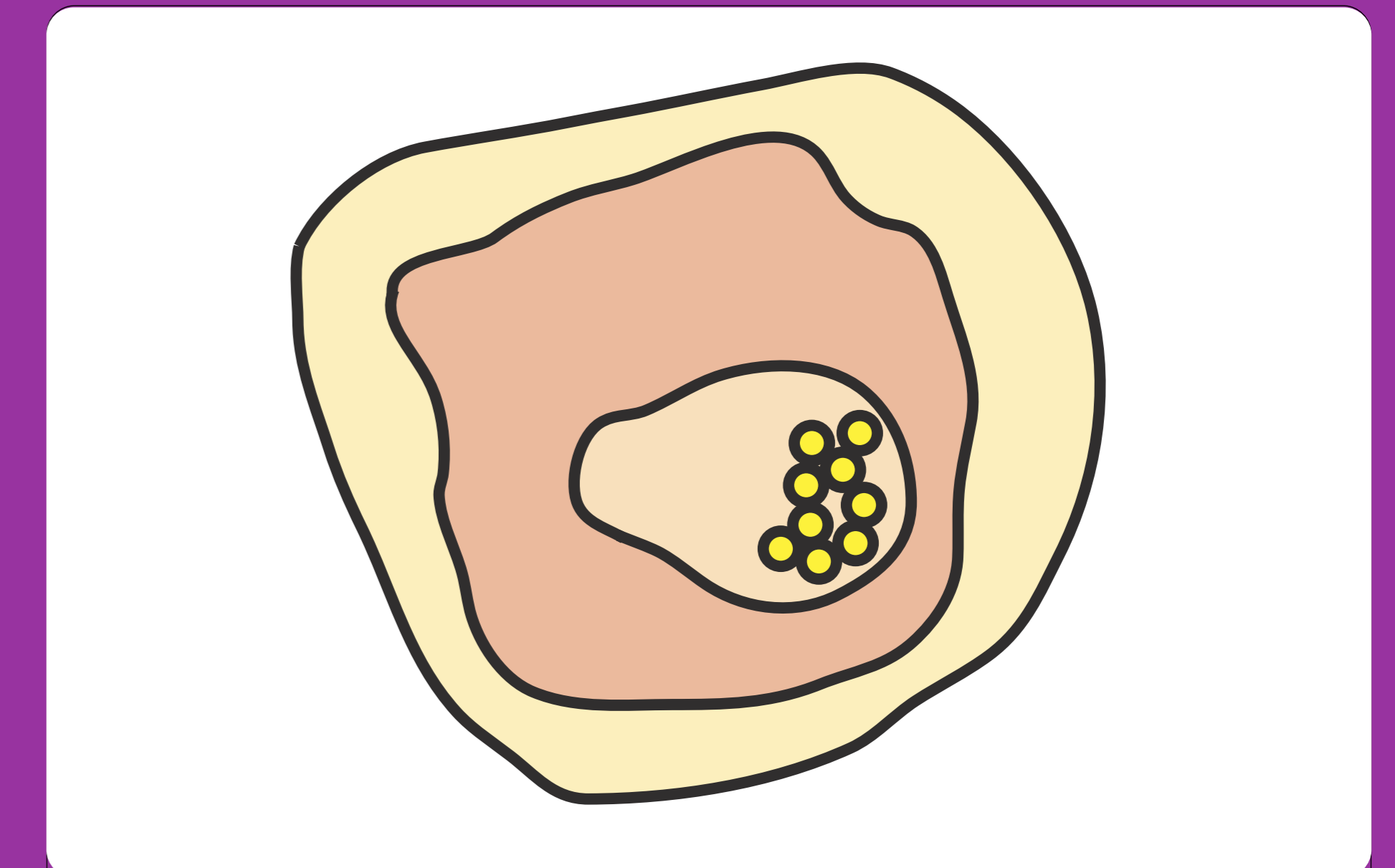
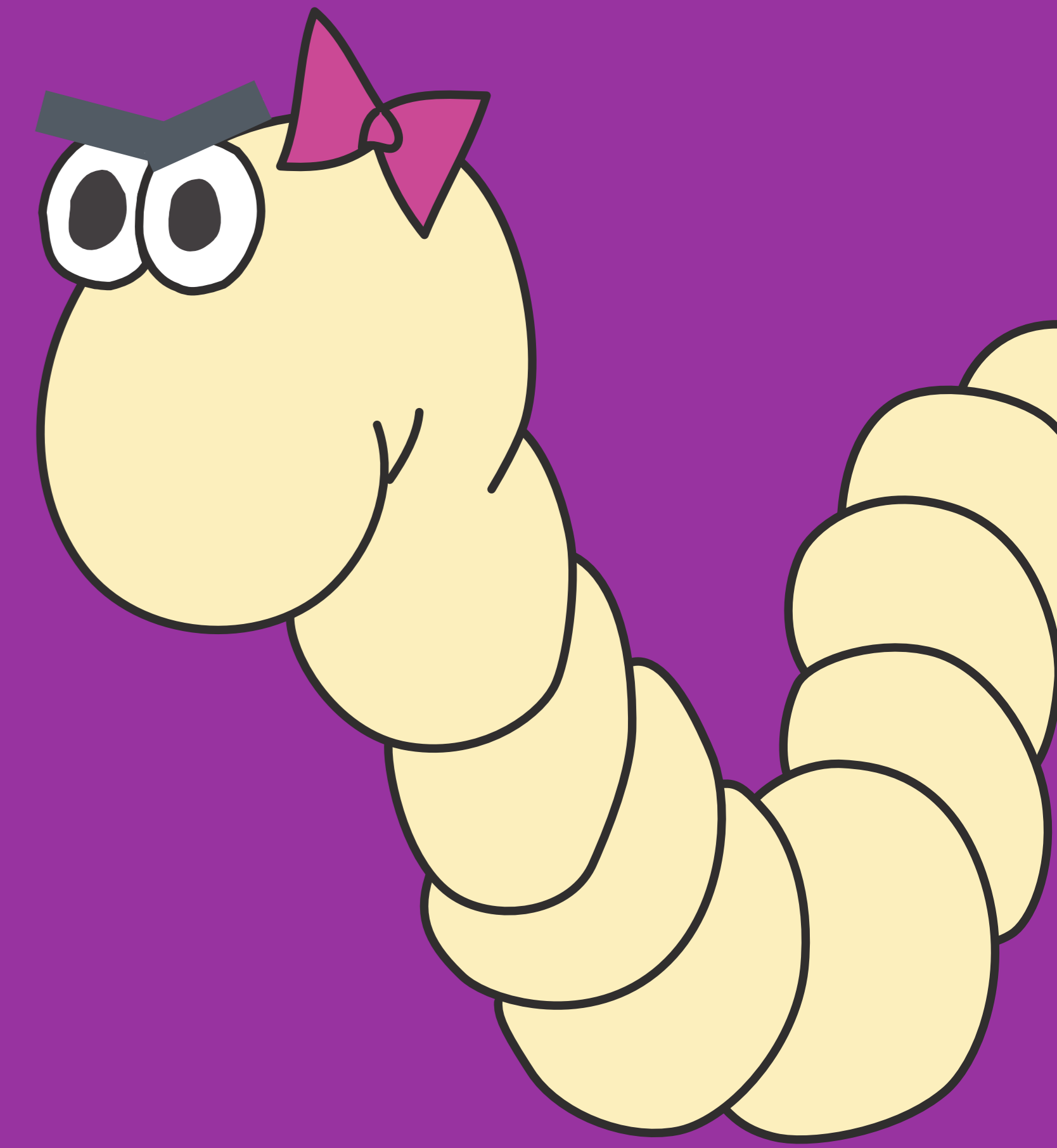
# Tina the Tapeworm life cycle



Sheep eat the mite by accident. The larvae burst out of the mite inside the sheep, and grow up into adults



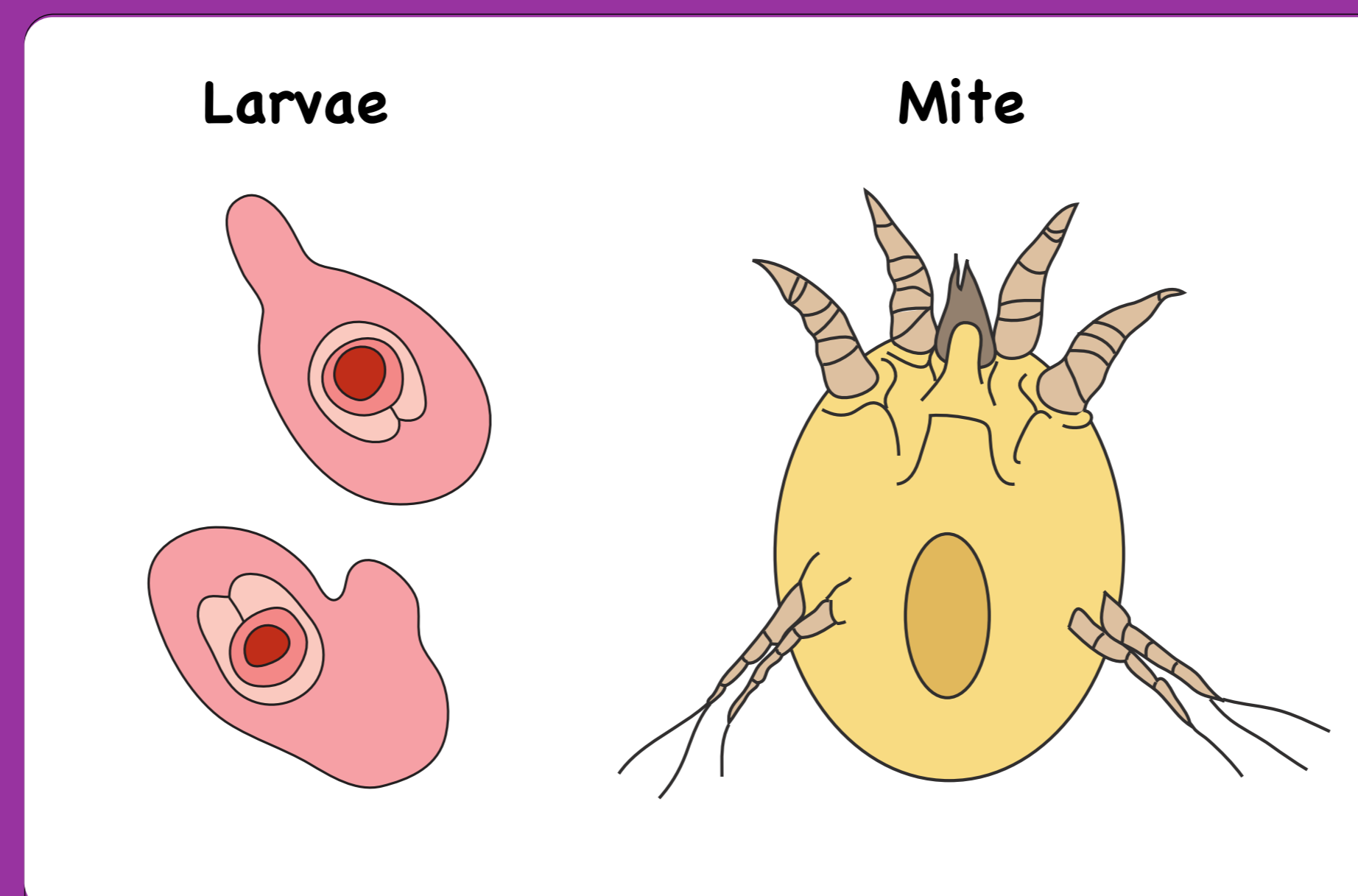
Tina, the adult worm, is 4 metres long and is made of lots of tiny segments. She lives in the sheep's intestine and steals food



Each worm segment contains eggs that pass out in the sheep's poo



The mite crawls up wet grass



A mite eats the eggs. The eggs hatch into larvae inside the mite's body

